

SOUTH 1/4 COR SEC 3

062649

T 17N
R 67W

RECEIVED
LARAMIE COUNTY
CHEYENNE, WY.

CERTIFIED LAND CORNER RECORDATION

OCT 5 PM 3 01

DESCRIPTION OF CORNER EVIDENCE FOUND, AND ORIGINAL RECORD (If known)

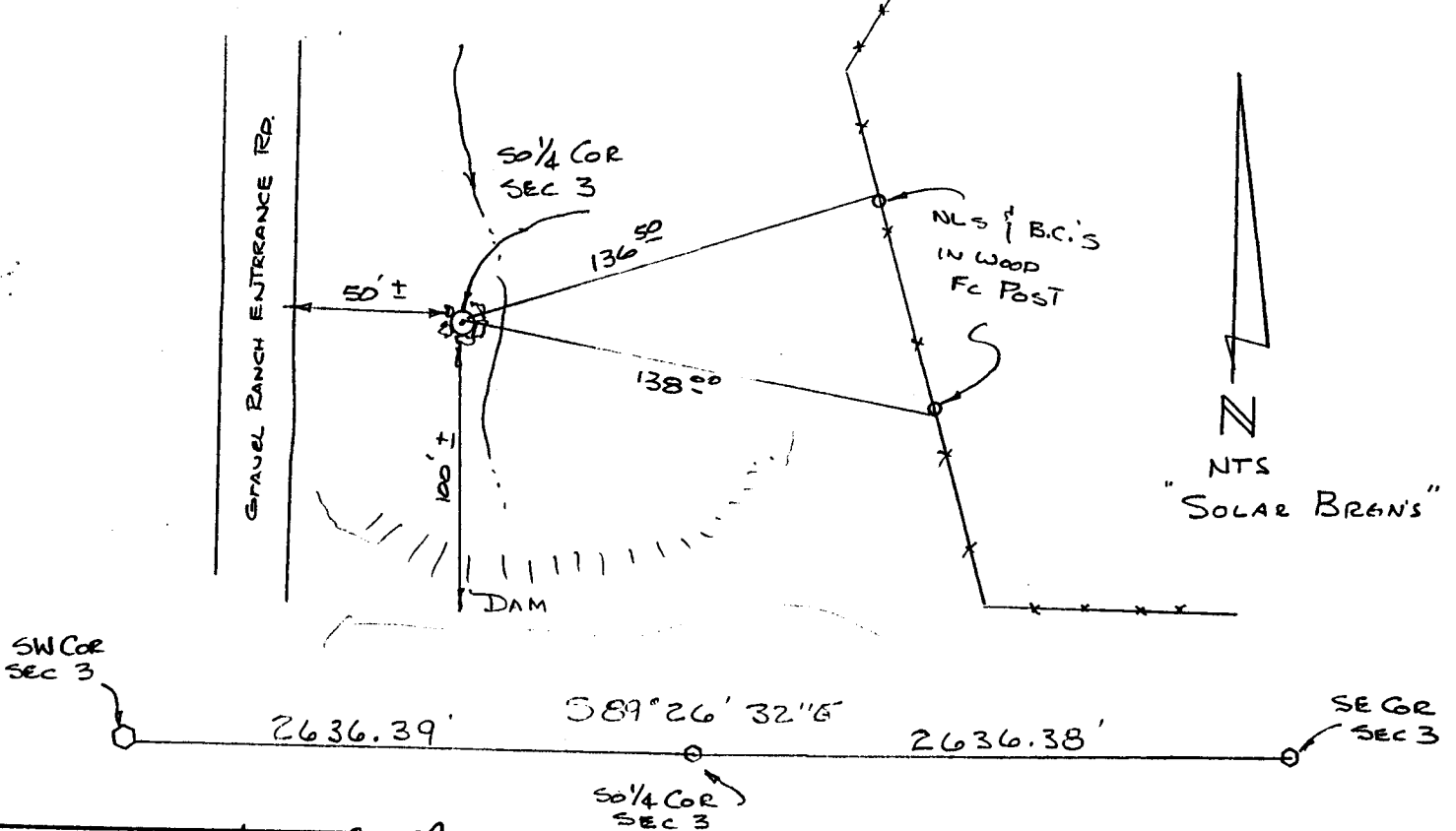
AFTER A THOROUGH SEARCH, NO CORNER EVIDENCE WAS FOUND. THE ORIGINAL GLO NOTES CALL FOR A 16X12X8 GRANITE STONE. THERE HAS BEEN SOME CONSTRUCTION IN THE AREA. I CALLED THE CORNER "LOST" AND RE-SET BY SINGLE PRO-RATE.

DESCRIPTION OF MONUMENT AND ACCESSORIES ESTABLISHED TO PERPETUATE THE ORIGINAL LOCATION OF THIS CORNER:

SET A 5/8" X 30" REBAR W/A CORPS OF ENGINEERS BRASS CAP @ TOP, FLUSH WITH GROUND & RAISED A MOUND OF STONE TIED OFF AS SHOWN BELOW.

July 10, 1989

SKETCH, WITH COURSE AND DISTANCE TO ADJACENT CORNER IF DETERMINED IN THIS SURVEY. (May Sketch or Paste Reproduction on Reverse Side.)

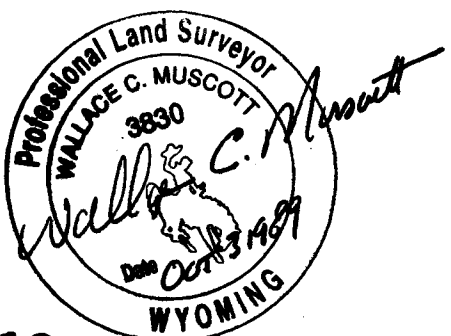


I, Wallace C. Muscott certify that I have carefully performed or reviewed the work done on the diagrammed corner as reported on this recordation form and approve the same.

Wallace C. Muscott 3830
Signature of Surveyor Registration No.

STATE OF WYOMING,
Office of Clerk and Recorder,
County of _____

This "corner record" was filed for record on the _____ day of _____, 19____, was noted on the cross-index plat and is assigned page No. _____, in book No. _____.



County Official			
Cross Index No. <u>E-15</u>	T. <u>17N</u>	R. <u>67W</u>	Mer. <u>6th</u>
_____	T. _____	R. _____	Mer. _____
_____	T. _____	R. _____	Mer. _____
_____	T. _____	R. _____	Mer. _____
_____	T. _____	R. _____	Mer. _____
_____	T. _____	R. _____	Mer. _____
_____	T. _____	R. _____	Mer. _____